



THE SCHOOL BOARD OF BROWARD COUNTY, FLORIDA
PROPOSED
2020-2021 ORGANIZATIONAL CHART



THE SCHOOL BOARD OF BROWARD COUNTY, FLORIDA

PROPOSED

2020-2021 ORGANIZATIONAL CHART

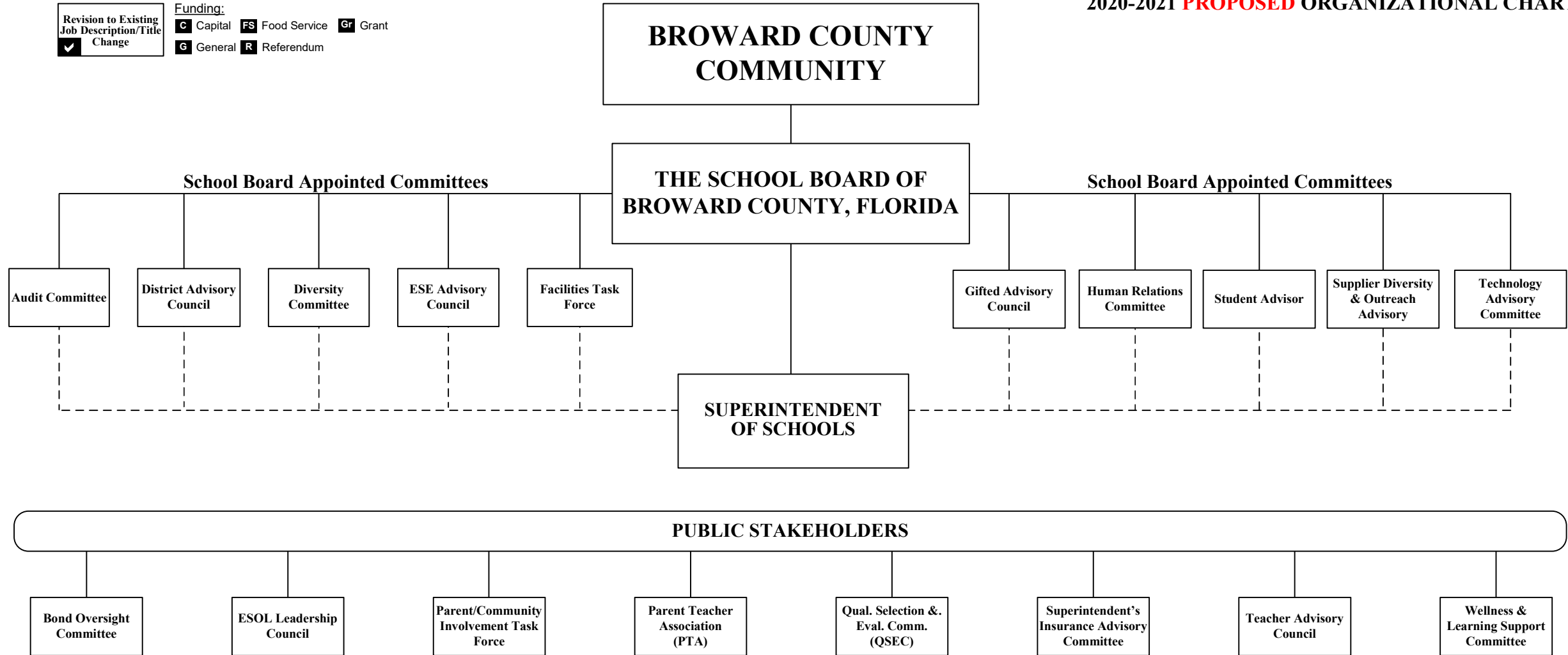
School Board Appointed Committees & Public Stakeholders	1
Superintendent of Schools	2
General Counsel	3
School Performance & Accountability	4
Academics	5-7
Learning & Development Support	5
Exceptional Student Learning Support	6
Student Learning	7
Student Support Initiatives & Recovery	8
Auditor	9
Capital Programs	10
Financial Management	11
Human Resources & Equity	12
Information & Technology	13
Portfolio Services	14
Communications	15
Chief of Staff	16
Safety, Security & Emergency Preparedness	17
Strategy & Operations	18-20
Business Support Center, Grants Administration, Strategic Implementation & Accountability	18
Food & Nutrition Services, Procurement & Warehousing Services, Supplier Diversity & Outreach, Student Transportation & Fleet Services	19
Physical Plant Operations	20

Funding from sources other than General Funds N	New Position Job Description Exists R	Reporting Change from Different Division A
New Position Job Description Does Not Exist N <input checked="" type="checkbox"/>	Job Study on Existing Position A	Alignment Change within same Division A
Funding: C Capital FS Food Service Gr Grant G General R Referendum		
Revision to Existing Job Description/Title Change <input checked="" type="checkbox"/>		



SCHOOL BOARD APPOINTED COMMITTEES & PUBLIC STAKEHOLDERS

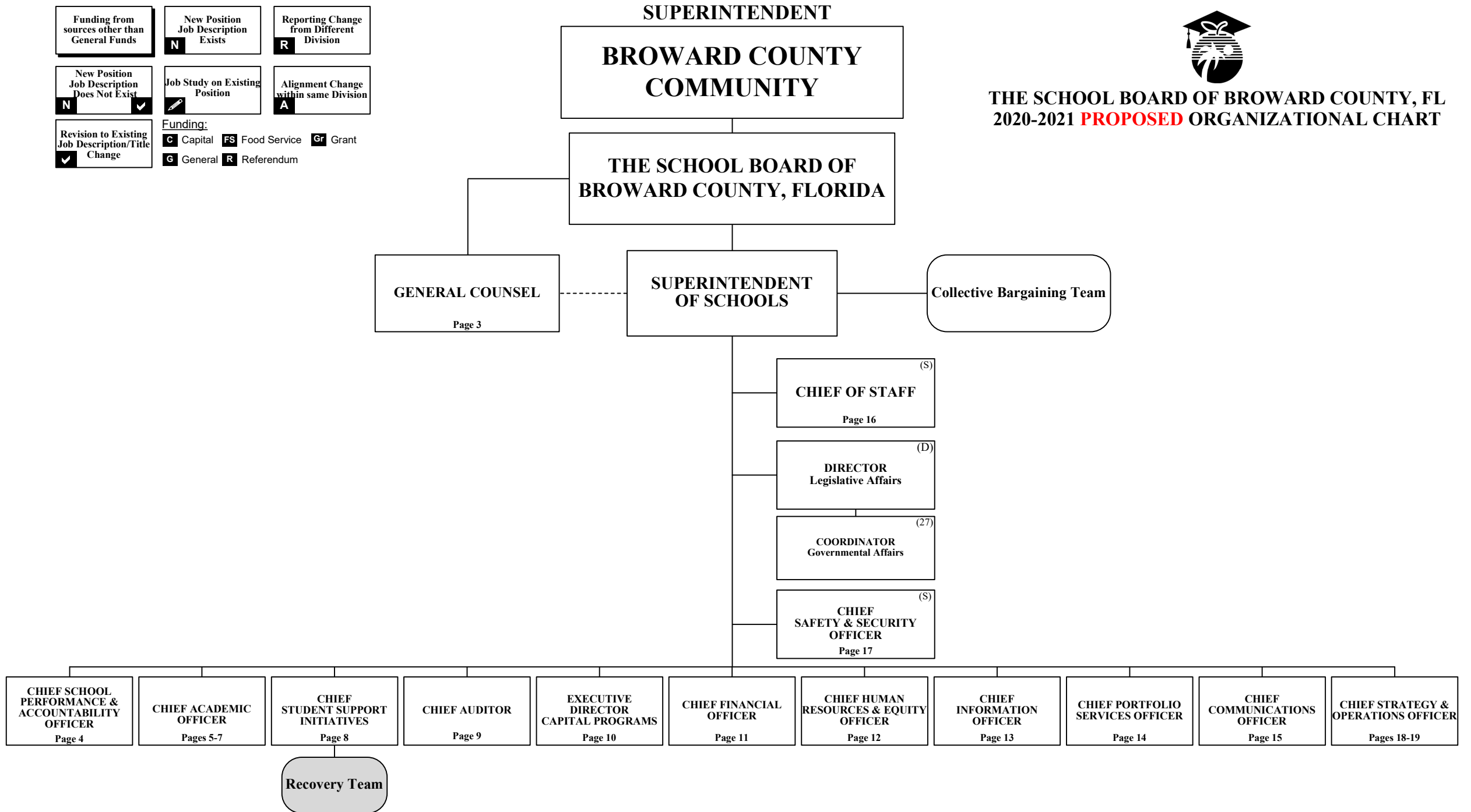
**THE SCHOOL BOARD OF BROWARD COUNTY, FL
2020-2021 PROPOSED ORGANIZATIONAL CHART**



Funding from sources other than General Funds N	New Position Job Description Exists N	Reporting Change from Different Division R
New Position Job Description Does Not Exist N <input checked="" type="checkbox"/>	Job Study on Existing Position A	Alignment Change within same Division A
Funding: C Capital FS Food Service Gr Grant G General R Referendum		
Revision to Existing Job Description/Title Change <input checked="" type="checkbox"/>		



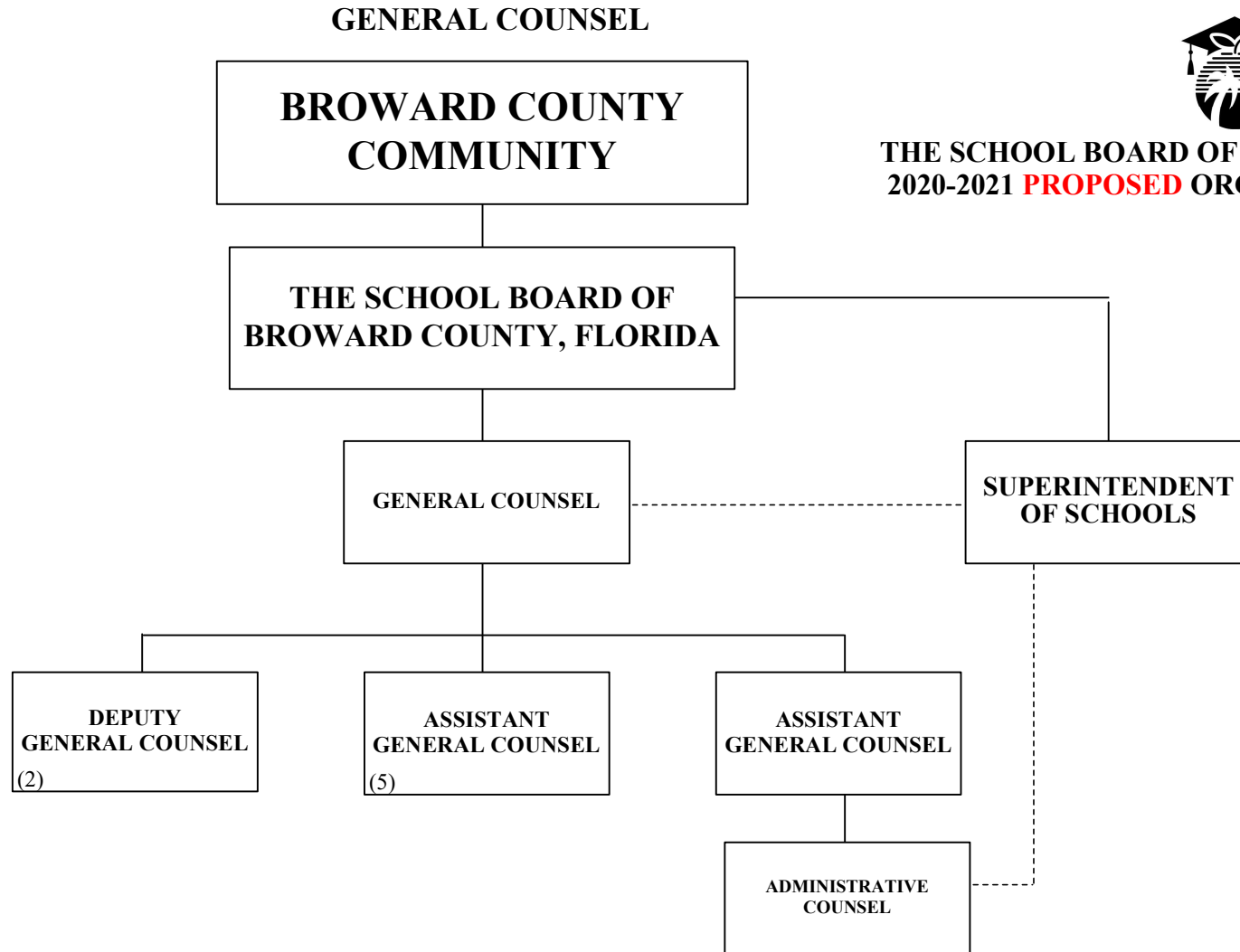
**THE SCHOOL BOARD OF BROWARD COUNTY, FL
2020-2021 PROPOSED ORGANIZATIONAL CHART**



Funding from sources other than General Funds N	New Position Job Description Exists N	Reporting Change from Different Division R
New Position Job Description Does Not Exist N <input checked="" type="checkbox"/>	Job Study on Existing Position A	Alignment Change within same Division A
Funding:		
Revision to Existing Job Description/Title Change <input checked="" type="checkbox"/>	C Capital	FS Food Service Gr Grant
	G General	R Referendum



**THE SCHOOL BOARD OF BROWARD COUNTY, FL
2020-2021 PROPOSED ORGANIZATIONAL CHART**



Funding from sources other than General Funds N	New Position Job Description Exists N	Reporting Change from Different Division R
New Position Job Description Does Not Exist N <input checked="" type="checkbox"/>	Job Study on Existing Position A	Alignment Change within same Division A
Revision to Existing Job Description/Title Change <input checked="" type="checkbox"/>	Funding: C Capital FS Food Service Gr Grant G General R Referendum	

SCHOOL PERFORMANCE & ACCOUNTABILITY OSPA



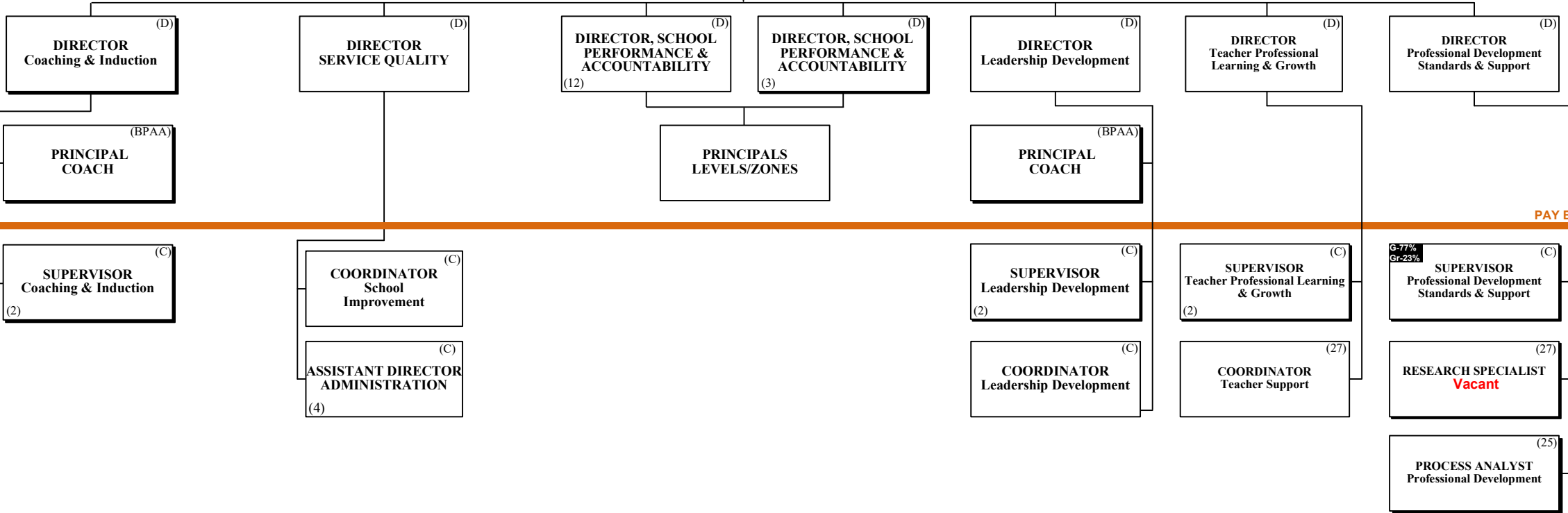
THE SCHOOL BOARD OF BROWARD COUNTY, FL
2020-2021 **PROPOSED** ORGANIZATIONAL CHART

THE SCHOOL BOARD OF BROWARD COUNTY, FLORIDA

SUPERINTENDENT OF SCHOOLS

CHIEF SCHOOL PERFORMANCE & ACCOUNTABILITY OFFICER (S)

PAY BANDS 'S' & 'E'



PAY BAND 'D'

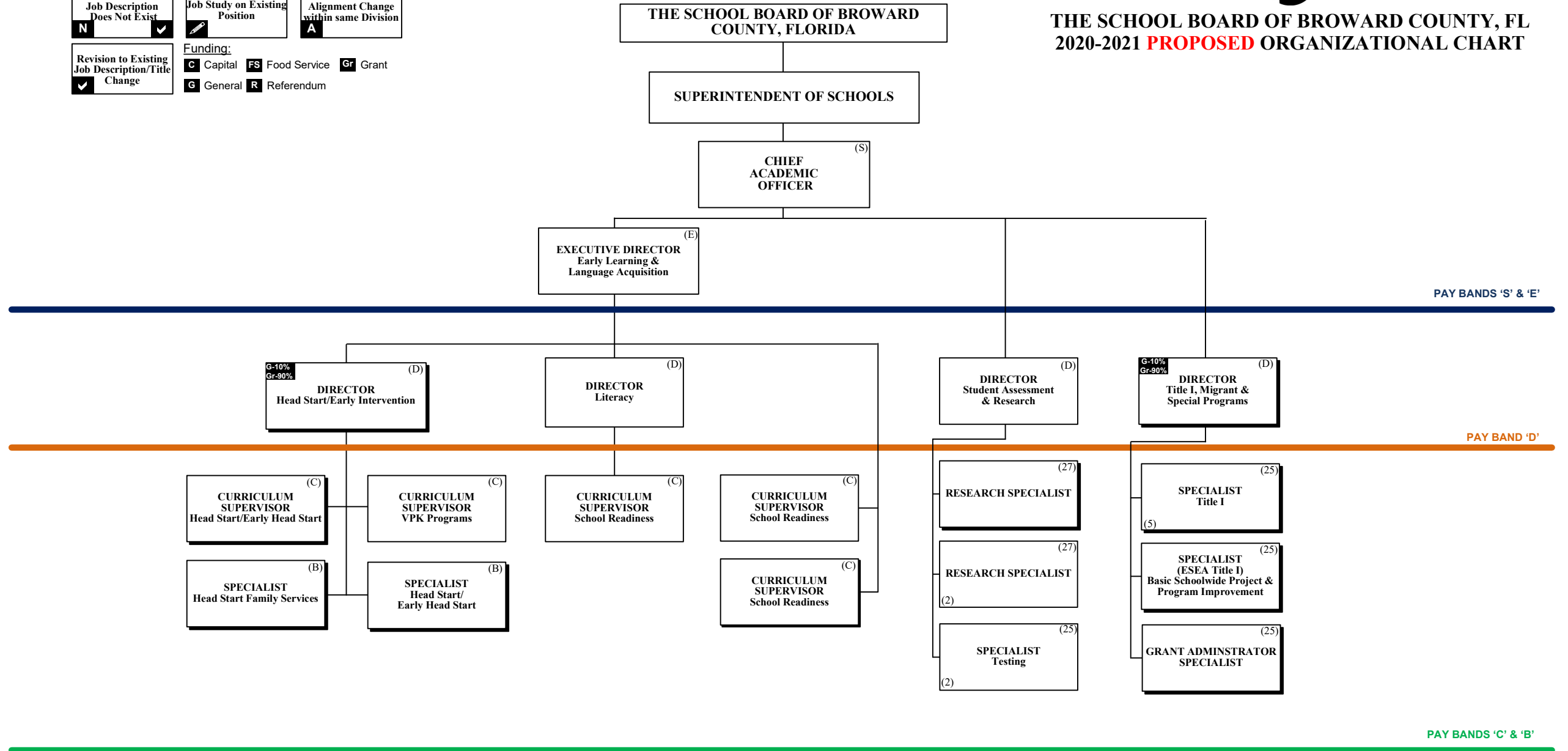
PAY BANDS 'C' & 'B'

Funding from sources other than General Funds N	New Position Job Description Exists N	Reporting Change from Different Division R
New Position Job Description Does Not Exist N <input checked="" type="checkbox"/>	Job Study on Existing Position A	Alignment Change within same Division A
Funding:		
Revision to Existing Job Description/Title Change <input checked="" type="checkbox"/>	C Capital FS Food Service Gr Grant	G General R Referendum

ACADEMICS LEARNING & DEVELOPMENT SUPPORT



**THE SCHOOL BOARD OF BROWARD COUNTY, FL
2020-2021 PROPOSED ORGANIZATIONAL CHART**



ACADEMICS EXCEPTIONAL STUDENT LEARNING SUPPORT



**THE SCHOOL BOARD OF BROWARD COUNTY, FL
2020-2021 PROPOSED ORGANIZATIONAL CHART**

Funding from sources other than General Funds N	New Position Job Description Exists N	Reporting Change from Different Division R
New Position Job Description Does Not Exist N	Job Study on Existing Position A	Alignment Change within same Division A
Revision to Existing Job Description/Title Change ✓		

Funding:
C Capital **FS** Food Service **Gr** Grant
G General **R** Referendum

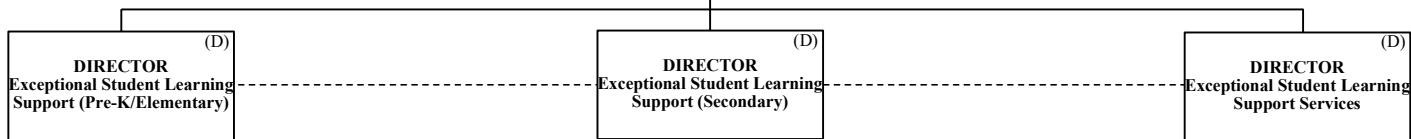
THE SCHOOL BOARD OF BROWARD COUNTY, FLORIDA

SUPERINTENDENT OF SCHOOLS

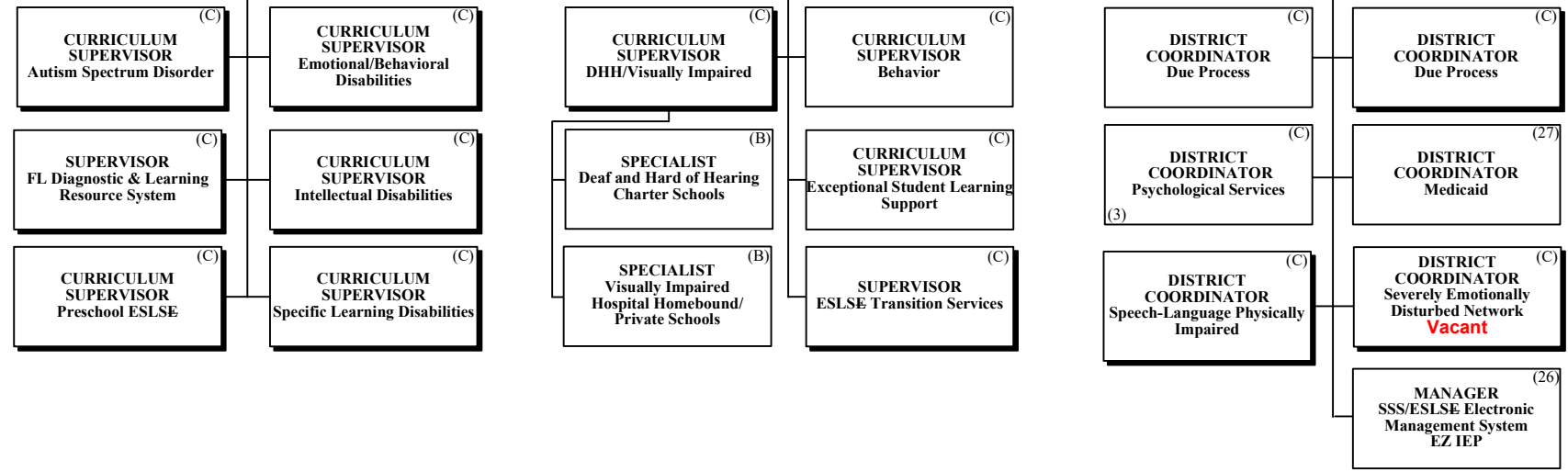
CHIEF ACADEMIC OFFICER ^(S)

EXECUTIVE DIRECTOR
Exceptional Student Learning Support ^(E)

PAY BANDS 'S' & 'E'



PAY BAND 'D'



PAY BANDS 'C' & 'B'

Funding from sources other than General Funds N	New Position Job Description Exists N	Reporting Change from Different Division R
New Position Job Description Does Not Exist N <input checked="" type="checkbox"/>	Job Study on Existing Position A	Alignment Change within same Division A
Funding: C Capital FS Food Service Gr Grant G General R Referendum		
Revision to Existing Job Description/Title Change <input checked="" type="checkbox"/>		

ACADEMICS STUDENT LEARNING

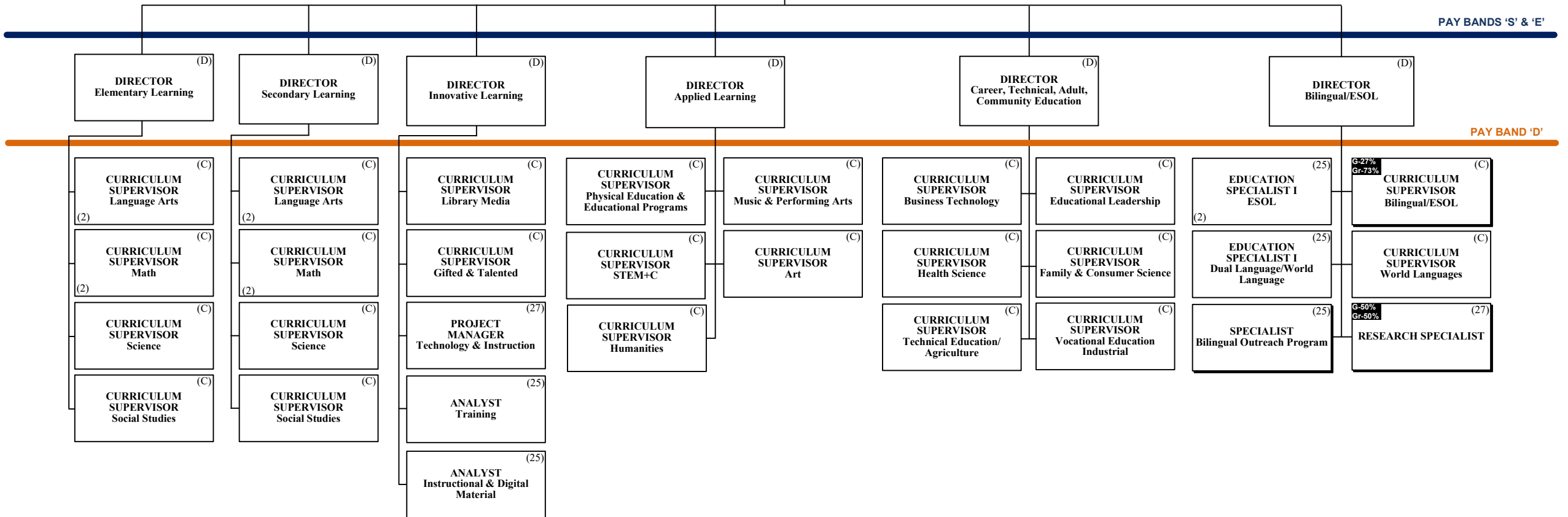


THE SCHOOL BOARD OF BROWARD COUNTY, FLORIDA

THE SCHOOL BOARD OF BROWARD COUNTY, FL
2020-2021 **PROPOSED** ORGANIZATIONAL CHART

SUPERINTENDENT OF SCHOOLS

CHIEF ACADEMIC OFFICER ^(S)



Funding from sources other than General Funds N	New Position Job Description Exists N	Reporting Change from Different Division R
New Position Job Description Does Not Exist N <input checked="" type="checkbox"/>	Job Study on Existing Position A	Alignment Change within same Division A
Funding:		
Revision to Existing Job Description/Title Change <input checked="" type="checkbox"/>	C Capital FS Food Service Gr Grant	G General R Referendum

STUDENT SUPPORT INITIATIVES & RECOVERY



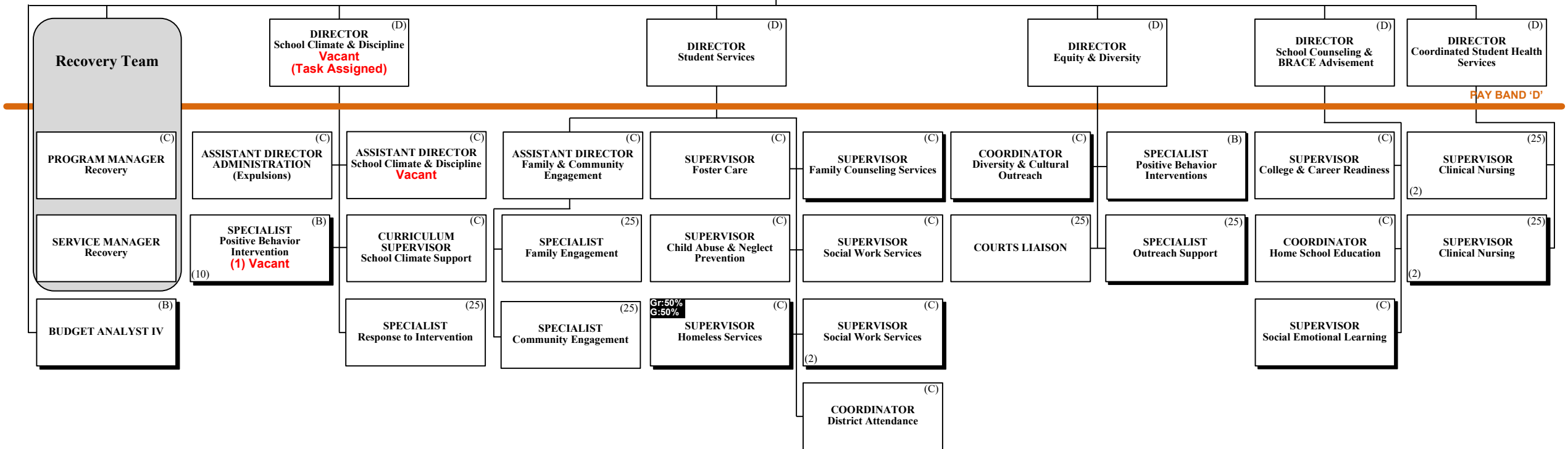
THE SCHOOL BOARD OF BROWARD COUNTY, FL
2020-2021 **PROPOSED** ORGANIZATIONAL CHART

THE SCHOOL BOARD OF BROWARD COUNTY, FLORIDA

SUPERINTENDENT OF SCHOOLS

CHIEF STUDENT SUPPORT INITIATIVES & RECOVERY (S)

PAY BANDS 'S' & 'E'



PAY BAND 'D'

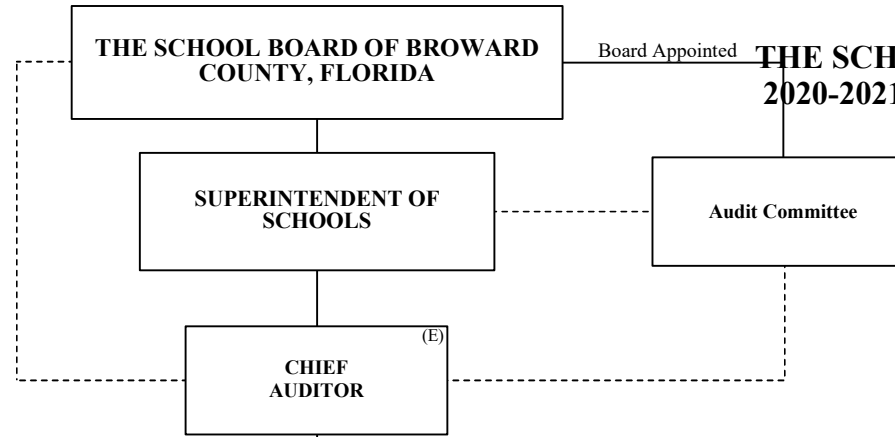
PAY BANDS 'C' & 'B'

Funding from sources other than General Funds N	New Position Job Description Exists N	Reporting Change from Different Division R
New Position Job Description Does Not Exist N <input checked="" type="checkbox"/>	Job Study on Existing Position A	Alignment Change within same Division A
Funding: C Capital FS Food Service Gr Grant G General R Referendum		
Revision to Existing Job Description/Title Change <input checked="" type="checkbox"/>		



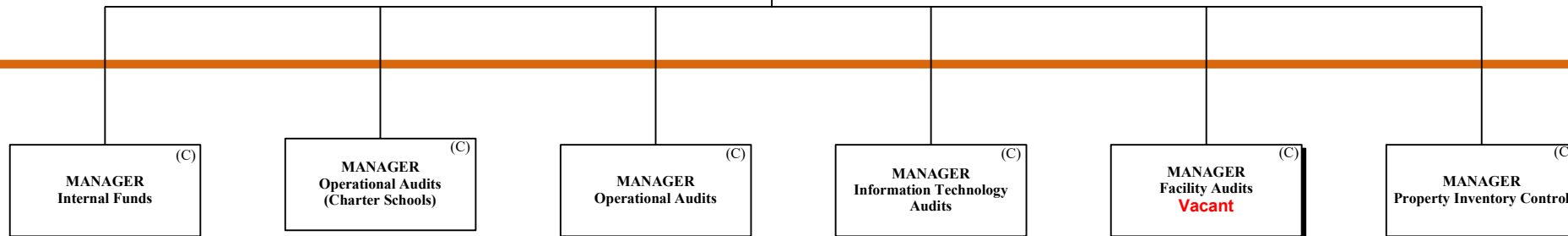
AUDITOR

THE SCHOOL BOARD OF BROWARD COUNTY, FL
2020-2021 **PROPOSED** ORGANIZATIONAL CHART



PAY BANDS 'S' & 'E'

PAY BAND 'D'



PAY BANDS 'C' & 'B'

Funding from sources other than General Funds N	New Position Job Description Exists N	Reporting Change from Different Division R
New Position Job Description Does Not Exist N <input checked="" type="checkbox"/>	Job Study on Existing Position A	Alignment Change within same Division A
Funding: C Capital FS Food Service Gr Grant G General R Referendum		
Revision to Existing Job Description/Title Change <input checked="" type="checkbox"/>		

CAPITAL PROGRAMS



THE SCHOOL BOARD OF BROWARD COUNTY, FL 2020-2021 **PROPOSED** ORGANIZATIONAL CHART

THE SCHOOL BOARD OF BROWARD COUNTY, FLORIDA

SUPERINTENDENT OF SCHOOLS

EXECUTIVE DIRECTOR
Capital Programs (E)

PAY BANDS 'S' & 'E'

DIRECTOR
Construction (D)

DIRECTOR
Program Controls (D)

DIRECTOR
Pre-Construction (D)

PAY BAND 'D'

MANAGER
Construction (C)
Vacant

MANAGER
Construction (C)
(2)

MANAGER
Database Administration (27)

MANAGER
Mechanical Engineering (C)

MANAGER
ADA Accessibility (C)

PROJECT
MANAGER III (27)

~~MANAGER
Business Process &
Performance
Improvement (C)~~

MANAGER
Architectural Engineering (C)

SPECIALIST
ADA Accessibility (25)

MANAGER
Electrical Engineering (C)

PROJECT
MANAGER III (27)

ESMAB PAY BANDS 'C' & 'B'
TSP PAY GRADES 25-28

Funding from sources other than General Funds N	New Position Job Description Exists N	Reporting Change from Different Division R
New Position Job Description Does Not Exist N <input checked="" type="checkbox"/>	Job Study on Existing Position A	Alignment Change within same Division A
Funding: C Capital FS Food Service Gr Grant G General R Referendum		
Revision to Existing Job Description/Title Change <input checked="" type="checkbox"/>		

FINANCIAL MANAGEMENT

THE SCHOOL BOARD OF BROWARD COUNTY, FLORIDA

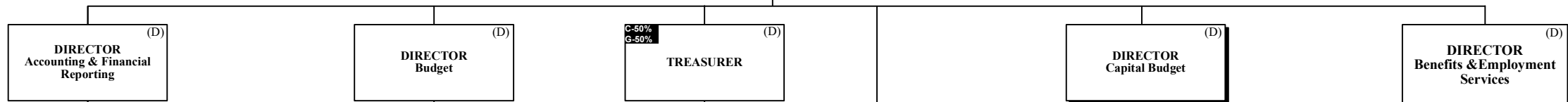


THE SCHOOL BOARD OF BROWARD COUNTY, FL
2020-2021 **PROPOSED** ORGANIZATIONAL CHART

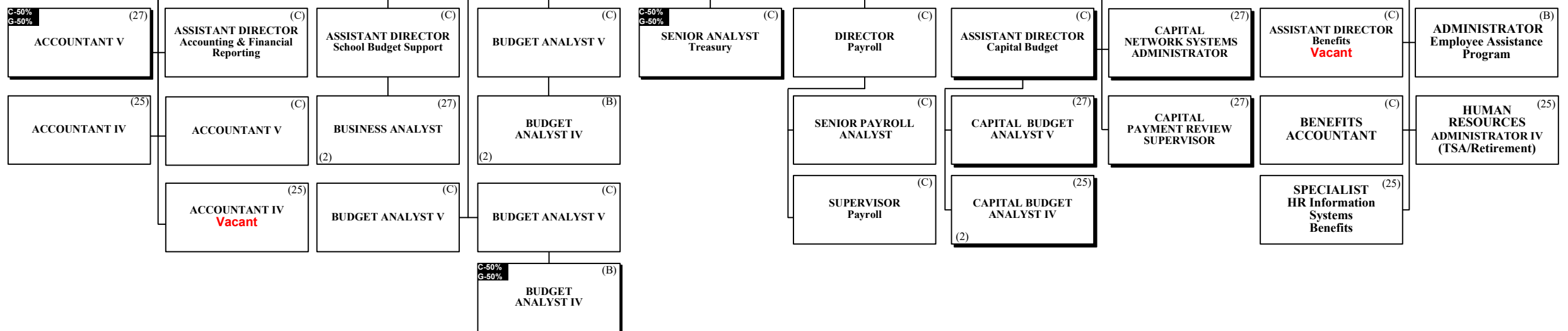
SUPERINTENDENT OF SCHOOLS

C-20%
G-80%
CHIEF FINANCIAL OFFICER (CFO) (S)

PAY BANDS 'S' & 'E'



PAY BAND 'D'



ESMAB PAY BANDS 'C' & 'B'
TSP PAY GRADES 25-28

Funding from sources other than General Funds N	New Position Job Description Exists N	Reporting Change from Different Division R
New Position Job Description Does Not Exist N <input checked="" type="checkbox"/>	Job Study on Existing Position A	Alignment Change within same Division A
Revision to Existing Job Description/Title Change <input checked="" type="checkbox"/>	Funding: C Capital FS Food Service Gr Grant G General R Referendum	

HUMAN RESOURCES & EQUITY
THE SCHOOL BOARD OF BROWARD COUNTY, FLORIDA



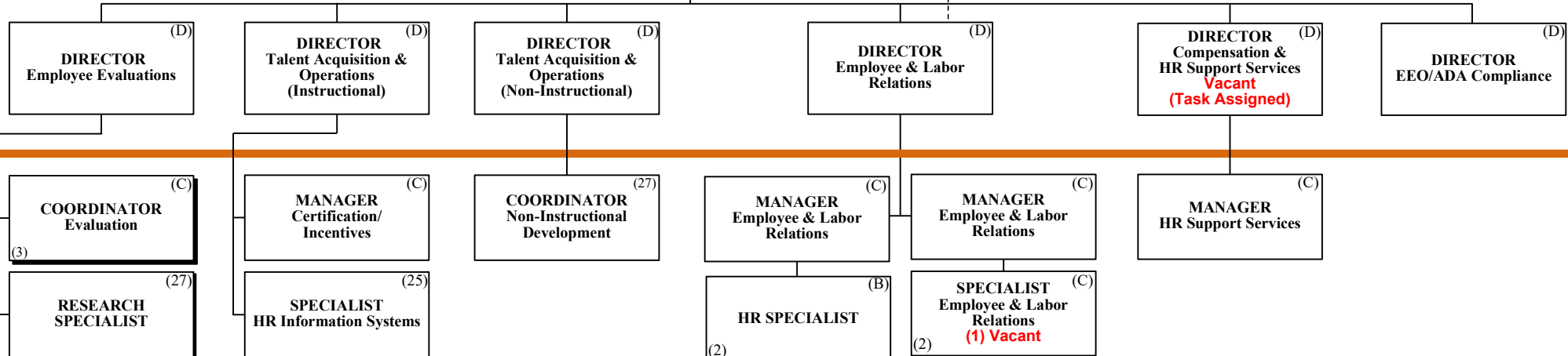
THE SCHOOL BOARD OF BROWARD COUNTY, FL
2020-2021 **PROPOSED** ORGANIZATIONAL CHART

SUPERINTENDENT OF SCHOOLS

CHIEF HUMAN RESOURCES & EQUITY OFFICER (S)

Collective Bargaining

PAY BANDS 'S' & 'E'



PAY BAND 'D'

ESMAB PAY BANDS 'C' & 'B'
TSP/PBA PAY GRADES 25-28

Funding from sources other than General Funds N	New Position Job Description Exists N	Reporting Change from Different Division R
New Position Job Description Does Not Exist N <input checked="" type="checkbox"/>	Job Study on Existing Position N	Alignment Change within same Division A
Funding: C Capital FS Food Service Gr Grant G General R Referendum		
Revision to Existing Job Description/Title Change <input checked="" type="checkbox"/>		

INFORMATION & TECHNOLOGY



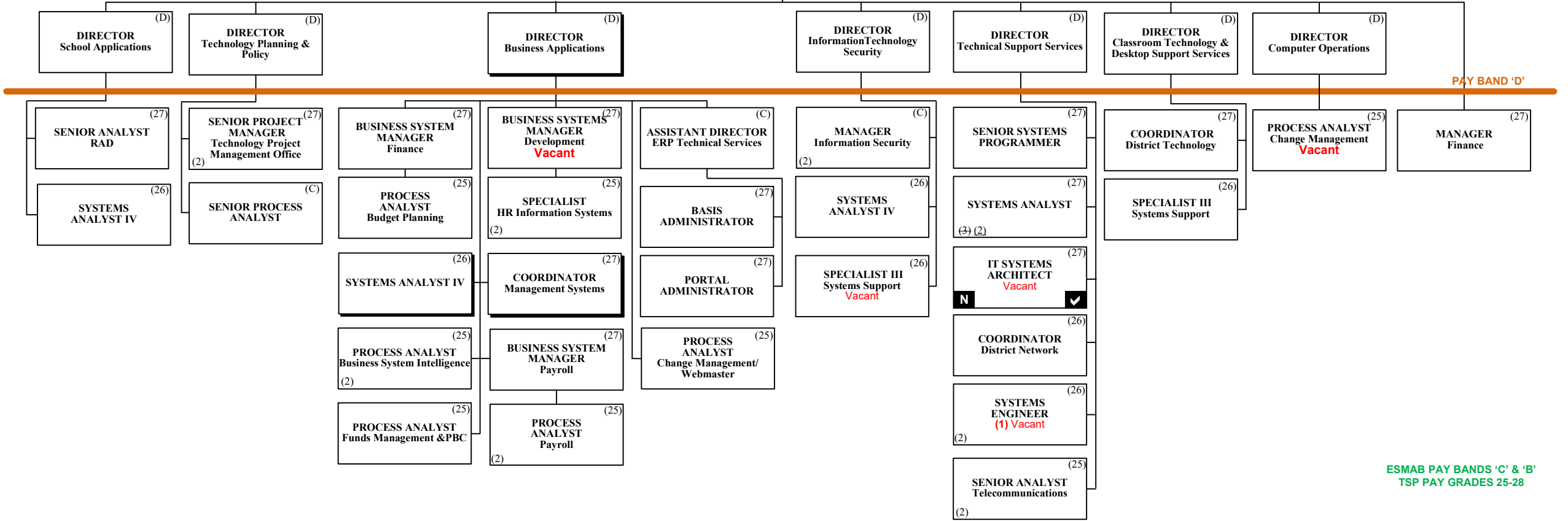
THE SCHOOL BOARD OF BROWARD COUNTY, FL 2020-2021 **PROPOSED** ORGANIZATIONAL CHART

THE SCHOOL BOARD OF BROWARD COUNTY, FLORIDA

SUPERINTENDENT OF SCHOOLS

CHIEF INFORMATION OFFICER (S)

PAY BANDS 'S' & 'E'



PAY BAND 'D'

ESMAB PAY BANDS 'C' & 'B'
TSP PAY GRADES 25-28

Funding from sources other than General Funds N	New Position Job Description Exists N	Reporting Change from Different Division R
New Position Job Description Does Not Exist N <input checked="" type="checkbox"/>	Job Study on Existing Position A	Alignment Change within same Division A
Funding: C Capital FS Food Service Gr Grant G General R Referendum		
Revision to Existing Job Description/Title Change <input checked="" type="checkbox"/>		

PORTFOLIO SERVICES

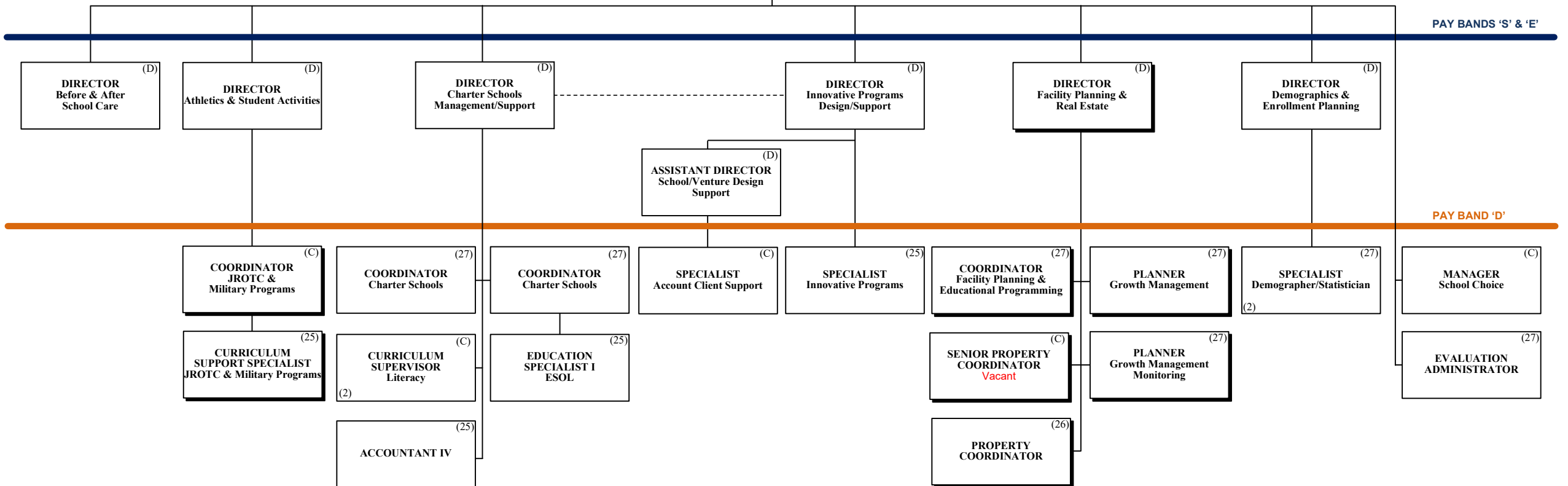


THE SCHOOL BOARD OF BROWARD COUNTY, FLORIDA

THE SCHOOL BOARD OF BROWARD COUNTY, FL
2020-2021 **PROPOSED** ORGANIZATIONAL CHART

SUPERINTENDENT OF SCHOOLS

CHIEF PORTFOLIO SERVICES OFFICER (E)



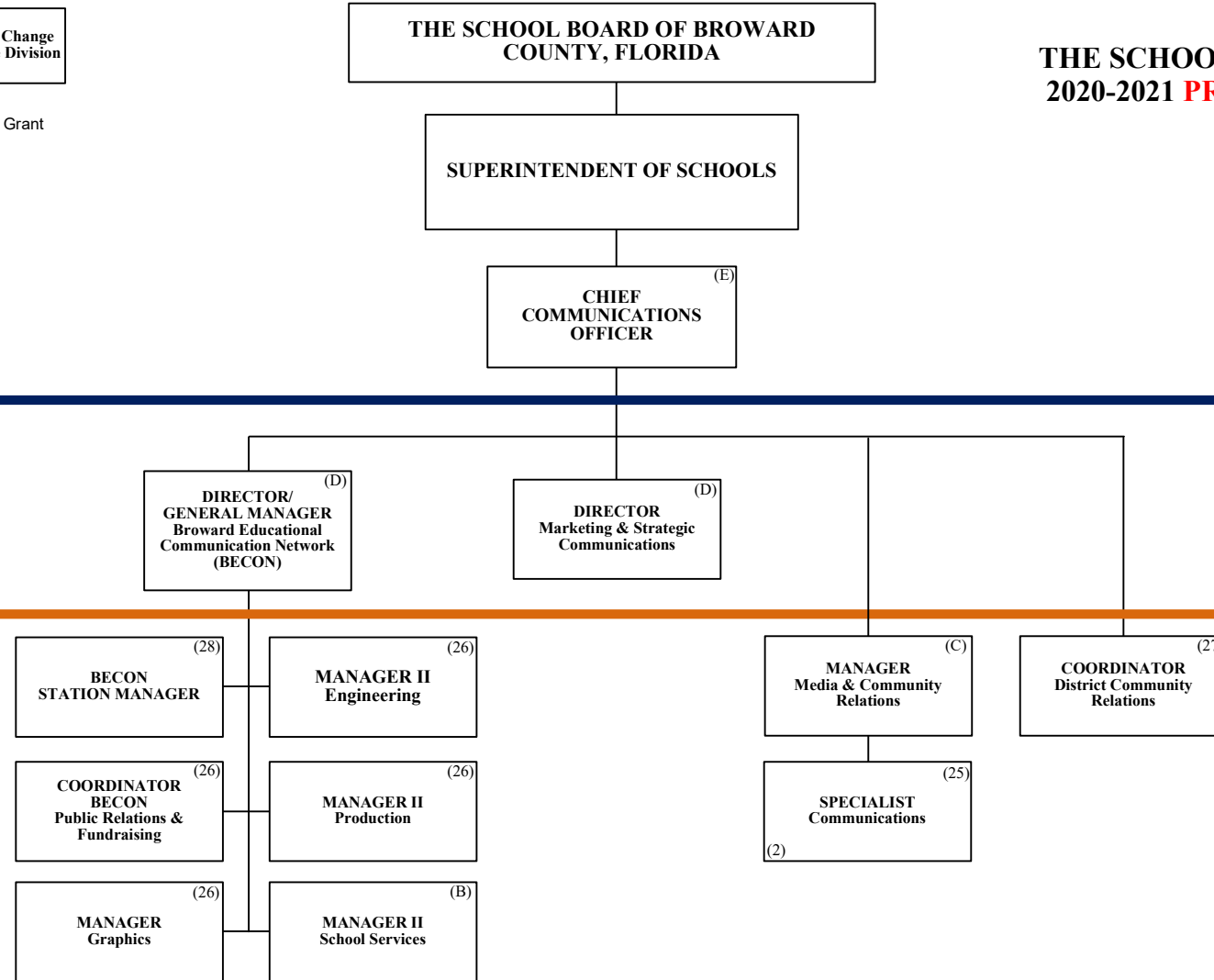
ESMAB PAY BANDS 'C' & 'B'
TSP PAY GRADES 25-28

Funding from sources other than General Funds N	New Position Job Description Exists N	Reporting Change from Different Division R
New Position Job Description Does Not Exist N <input checked="" type="checkbox"/>	Job Study on Existing Position A	Alignment Change within same Division A
Revision to Existing Job Description/Title Change <input checked="" type="checkbox"/>	Funding: C Capital FS Food Service Gr Grant G General R Referendum	



**THE SCHOOL BOARD OF BROWARD COUNTY, FL
2020-2021 PROPOSED ORGANIZATIONAL CHART**

COMMUNICATIONS



PAY BANDS 'S' & 'E'

PAY BAND 'D'

ESMAB PAY BANDS 'C' & 'B'
TSP PAY GRADES 25-28

Funding from sources other than General Funds N	New Position Job Description Exists N	Reporting Change from Different Division R
New Position Job Description Does Not Exist N <input checked="" type="checkbox"/>	Job Study on Existing Position A	Alignment Change within same Division A
Funding: C Capital FS Food Service Gr Grant G General R Referendum		
Revision to Existing Job Description/Title Change <input checked="" type="checkbox"/>		

CHIEF OF STAFF



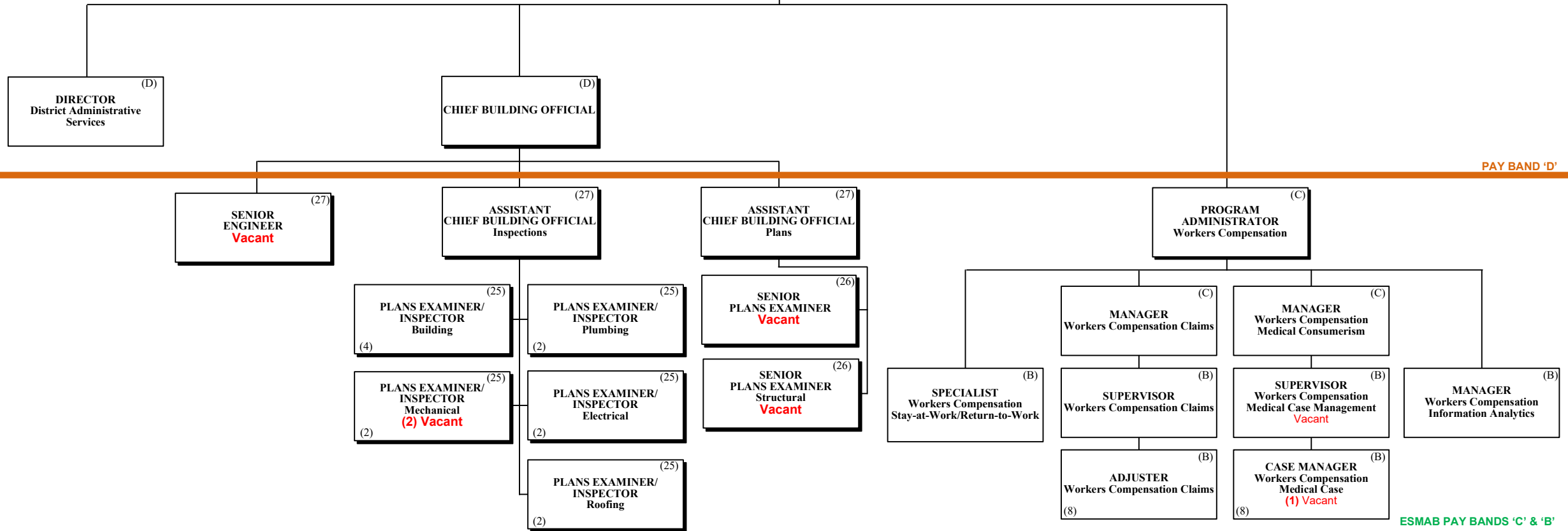
THE SCHOOL BOARD OF BROWARD COUNTY, FLORIDA

THE SCHOOL BOARD OF BROWARD COUNTY, FL 2020-2021 **PROPOSED** ORGANIZATIONAL CHART

SUPERINTENDENT OF SCHOOLS

CHIEF OF STAFF (S)

PAY BANDS 'S' & 'E'



PAY BAND 'D'

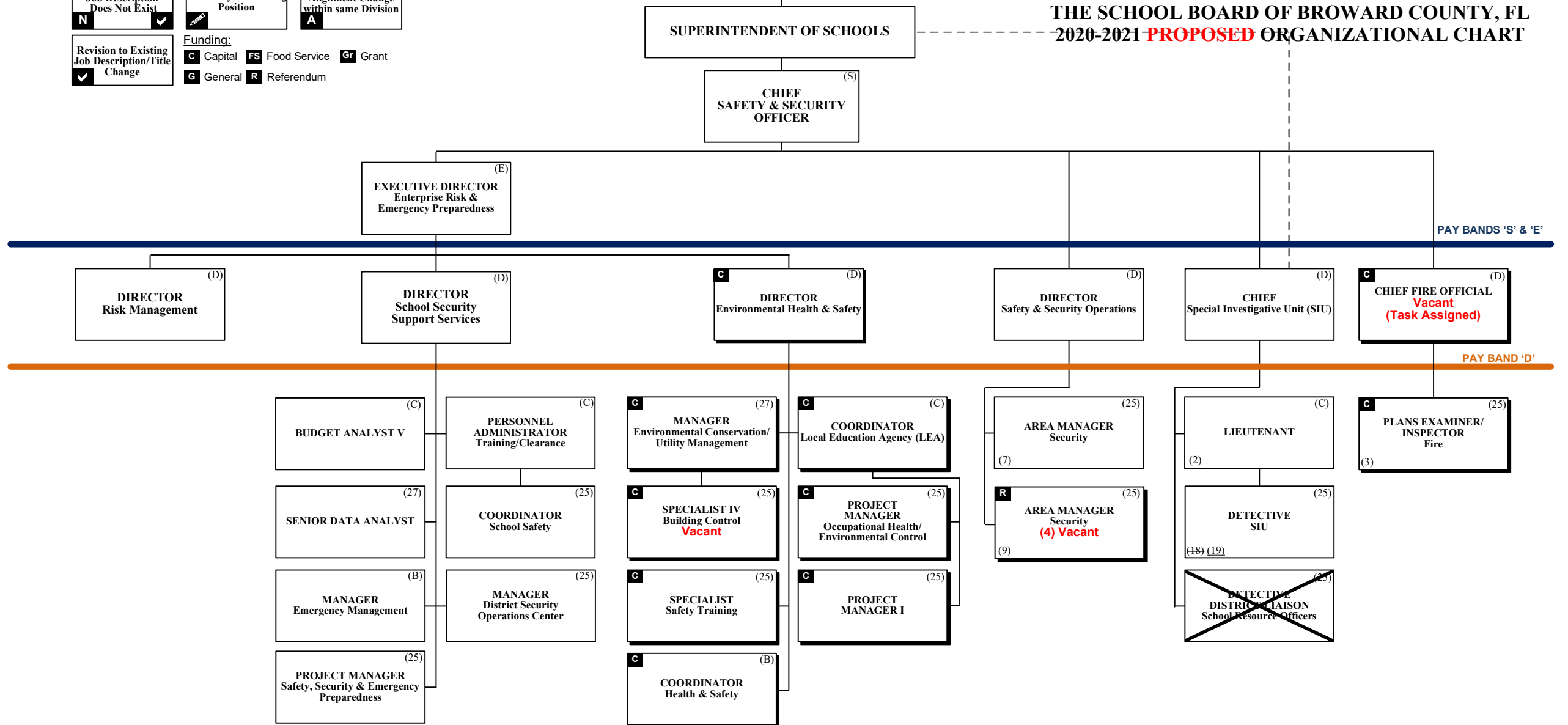
ESMAB PAY BANDS 'C' & 'B'
TSP PAY GRADES 25-28

Funding from sources other than General Funds N	New Position Job Description Exists N	Reporting Change from Different Division R
New Position Job Description Does Not Exist N <input checked="" type="checkbox"/>	Job Study on Existing Position A	Alignment Change within same Division A
Funding: C Capital FS Food Service Gr Grant G General R Referendum		
Revision to Existing Job Description/Title Change <input checked="" type="checkbox"/>		

SAFETY, SECURITY & EMERGENCY PREPAREDNESS
THE SCHOOL BOARD OF BROWARD COUNTY, FLORIDA



THE SCHOOL BOARD OF BROWARD COUNTY, FL
2020-2021 **PROPOSED** ORGANIZATIONAL CHART



ESMAB PAY BANDS 'C' & 'B'
TSP PAY GRADES 25-28

Funding from sources other than General Funds <input type="checkbox"/>	New Position Job Description Exists <input type="checkbox"/>	Reporting Change from Different Division <input type="checkbox"/>
New Position Job Description Does Not Exist <input checked="" type="checkbox"/>	Job Study on Existing Position <input type="checkbox"/>	Alignment Change within same Division <input type="checkbox"/>
Funding:		
Revision to Existing Job Description/Title Change <input checked="" type="checkbox"/>	<input checked="" type="checkbox"/> Capital	<input type="checkbox"/> FS Food Service <input type="checkbox"/> Gr Grant
	<input type="checkbox"/> General	<input type="checkbox"/> R Referendum

STRATEGY & OPERATIONS



THE SCHOOL BOARD OF BROWARD COUNTY, FL 2020-2021 **PROPOSED** ORGANIZATIONAL CHART

THE SCHOOL BOARD OF BROWARD COUNTY, FLORIDA

SUPERINTENDENT OF SCHOOLS

CHIEF STRATEGY & OPERATIONS OFFICER (S)

EXECUTIVE DIRECTOR Strategic Initiative Management (E)

PAY BANDS 'S' & 'E'

DIRECTOR Grants Administration (D)

DIRECTOR Business Support Center (D)
Vacant (Task Assigned)
A

DIRECTOR Performance Management (D)

DIRECTOR Program Evaluation (D)

PAY BAND 'D'

SENIOR MANAGER Grant Programs (C)

MANAGER Grant Programs Oversight (26)
(2)

GRANTS ADMINISTRATOR Accountability & Reporting (25)

MANAGER Budget (27)

BUSINESS ANALYST (27)
(2)

SUPERVISOR I Printing Services (26)

COORDINATOR Performance Management (C)
Vacant

COORDINATOR Strategic Management (C)
Vacant

EVALUATION ADMINISTRATOR (27)

ESMAB PAY BANDS 'C' & 'B'
TSP PAY GRADES 25-28

Funding from sources other than General Funds N	New Position Job Description Exists N	Reporting Change from Different Division R
New Position Job Description Does Not Exist N	Job Study on Existing Position A	Alignment Change within same Division A
Funding: C Capital FS Food Service Gr Grant G General R Referendum		
Revision to Existing Job Description/Title Change ✓		

STRATEGY & OPERATIONS

THE SCHOOL BOARD OF BROWARD COUNTY, FLORIDA



THE SCHOOL BOARD OF BROWARD COUNTY, FL 2020-2021 **PROPOSED** ORGANIZATIONAL CHART

SUPERINTENDENT OF SCHOOLS

CHIEF STRATEGY & OPERATIONS OFFICER (S)

EXECUTIVE DIRECTOR (E)
Student Transportation & Fleet Services
Vacant
(Task Assigned)

PAY BANDS 'S' & 'E'

DIRECTOR (D)
Food & Nutrition Services

DIRECTOR (D)
Procurement & Warehousing Services

OFFICER (D)
Economic Development & Diversity Compliance
C-50%
G-50%

DIRECTOR (D)
Student Transportation & Fleet Services

PAY BAND 'D'

ASSISTANT DIRECTOR (C)
Food & Nutrition Services

COORDINATOR (C)
Food & Nutrition Services
Vacant

MANAGER (C)
Strategic Sourcing
A

MANAGER (C)
Construction Sourcing
A

ASSISTANT DIRECTOR (C)
Procurement Compliance

MANAGER (C)
Supplier Diversity & Outreach Program
C-50%
G-50%

ASSISTANT DIRECTOR (C)
Transportation Support Services

MANAGER I (B)
Transportation Terminal
(2)

MANAGER I (C)
Vehicle Maintenance

MANAGER (C)
Centralized Routing

AREA SUPERVISOR (B)
Food & Nutrition Services
(1) Vacant

FINANCE MANAGER (C)
Food & Nutrition Services

MANAGER (B)
Warehousing Services
Vacant

PURCHASING AGENT IV (25)
Construction

SENIOR PROCESS ANALYST (C)

COORDINATOR (26)
Supplier Diversity & Outreach Program

MANAGER II (C)
Transportation Terminal
(1) Vacant
(2)

SUPERVISOR (25)
Special Needs Transportation

SUPERVISOR (25)
Vehicle Maintenance
(2)

DATA ANALYST (25)
Transportation

AREA SUPERVISOR (B)
Special Programs Food & Nutrition Services
(2)

PROGRAM MANAGER (26)
Nutrition, Education & Training
Vacant
(Task Assigned)

MANAGER (B)
Warehousing Services
Vacant

SENIOR PROCESS ANALYST (C)

COORDINATOR (26)
Supplier Diversity & Outreach Program (Compliance)
C-50%
G-50%

ACCOUNTANT V (27)

SUPERVISOR (B)
Food & Nutrition Services Information Systems
Vacant

SUPERVISOR (25)
Food & Nutrition Services Equipment & Supplies

MANAGER (B)
Warehousing Services
Vacant

PROCESS ANALYST (25)
Procurement & Warehousing Services
(1) Vacant
(2)

PURCHASING AGENT IV (25)

ESMAB PAY BANDS 'C' & 'B'
TSP PAY GRADES 25-28

Funding from sources other than General Funds N	New Position Job Description Exists N	Reporting Change from Different Division R
New Position Job Description Does Not Exist N <input checked="" type="checkbox"/>	Job Study on Existing Position A	Alignment Change within same Division A
Funding: C Capital FS Food Service Gr Grant G General R Referendum		
Revision to Existing Job Description/Title Change <input checked="" type="checkbox"/>		



**THE SCHOOL BOARD OF BROWARD COUNTY, FL
2020-2021 PROPOSED ORGANIZATIONAL CHART**

STRATEGY & OPERATIONS

THE SCHOOL BOARD OF BROWARD COUNTY, FLORIDA

SUPERINTENDENT OF SCHOOLS

CHIEF STRATEGY & OPERATIONS OFFICER (S)

EXECUTIVE DIRECTOR Physical Plant Operations (E)

PAY BANDS 'S' & 'E'

DIRECTOR Physical Plant Operations (D)
C-70%
G-30%

PAY BAND 'D'

MANAGER Custodial/Grounds (C)
C-55%
G-45%

AREA MANAGER Trades Zone 1 Vacant (C)
C-70%
G-30%

AREA MANAGER Trades Zone 3 (C)
C-70%
G-30%

MANAGER Facilities Support Services (C)

MANAGER PPO Finance (C)

SENIOR PROCESS ANALYST Vacant (C)
C
N

MANAGER Grounds (26)
C-55%
G-45%

AREA MANAGER Trades Zone 2 (C)
C-70%
G-30%

AREA MANAGER Trades District (C)
C-70%
G-30%

SUPERVISOR Work Flow/Labor Utilization Vacant (25)
C-55%
G-45%

SUPERVISOR Planning & Scheduling Vacant (25)
C-55%
G-45%

TRADE SUPERVISOR (1) Vacant (25)
(9)